

REGULAR MEETING MINUTES



**Date:** 3/11/2026  
**Time:** 6:30 p.m.  
**Location:** Teleconference and  
City Council Chambers  
751 Laurel St., Menlo Park, CA 94025

**A. Call To Order**

Chair Ierokomos called the meeting to order at 6:35 p.m.

**B. Roll Call**

**Present:** Bailey, Cebrian, Cole, Herscher, Ierokomos, Rascoff, Rennie,  
**Absent:** None  
**Staff:** Public Works Director Azalea Mitch, Transportation Manager Joanna Chan, Senior Transportation Planner Catrine Machi

**C. Reports and Announcements**

The Commission received updates on City Council feedback received on the Slow Streets Program March 10 and upcoming priority setting workshop March 21.

**D. Public Comment**

- Ken Kershner spoke on concerns related to city contracts and consultant disclosure for using artificial intelligence.

**E. Regular Business**

E1. Accept the Complete Streets Commission minutes for February 11, 2026 (Attachment).

**ACTION:** Motion and second (Rennie/ Cebrian), to accept the Complete Streets Commission minutes for February 11, 2026, passed 5-0-2 (Cole and Rascoff abstained).

E2. Recommend conclusion of the Nealon Park Parking Pilot Project to City Council (Attachment)

Senior Transportation Planner Catrine Machi made the presentation (Attachment).

The Commission received clarification on the ability to prevent U-turns on Middle Avenue, parking availability along the eucalyptus trees, planter boxes and Americans with Disabilities Act (ADA) markings in the back-in angled parking spots.

- Levi Romandine spoke in support of the back-in angled parking along and a cohesive review of all of the parking lots.

The Commission discussed the need for review of the planters near the tennis courts and repainting the ADA markings in the back-in angled parking spots for increased visibility.

**ACTION:** Motion and second (Herscher/ Cole), to recommend the conclusion of the Nealon Park Parking Pilot Project with the existing back-in angled parking configuration, passed unanimously.

**F. Informational Items**

F1. Update on major project status

The Commission received an update on progress of the Middle Avenue traffic calming implementation and San Mateo County's plans for their segment of Coleman Avenue traffic calming.

The Commission requested an update on potential repair of the Olive Street and Middle Avenue intersection bollards.

**G. Committee/Subcommittee Reports**

None.

**H. Adjournment**

Chair Ierokomos adjourned the meeting at 7:19 p.m.

Senior Transportation Planner Catrine Machi



# Nealon Park Parking Pilot – Complete Streets Commission March 2026

Catrine Machi, Senior Transportation Planner

# Agenda

---

- History
- Commission Direction
- Design Options
- Park Usage / Parking Needs
- Staff Recommendation
- Next Steps



# Nealon Park Parking Pilot Project History

---

Before Oct 2023  
Perpendicular  
Parking  
(No Bike Lane)



Oct 2023  
Parallel Parking  
Pilot  
(Buffered Bike Lane)



2024 to present  
Back-In Angled  
Parking Pilot  
(Buffered Bike Lane)



## Commission Direction - November 2025

---

- Bike lane placement
- Option including full removal of frontage parking
- Option including parallel parking with time-limited parking
- Strategies to improve back parking lot utilization
- Continued monitoring of current configuration

## Bike Lane Positioning

- Commission directed staff to re-evaluate bike lane placement along Middle Avenue.
- Parallel parking pilot shifted the bike lane between parking and sidewalk
- Bicyclists continued riding in the travel lane instead of using the shifted alignment
- Staff recommends keeping the bike lane in the roadway right-of-way, consistent with the rest of Middle Avenue.

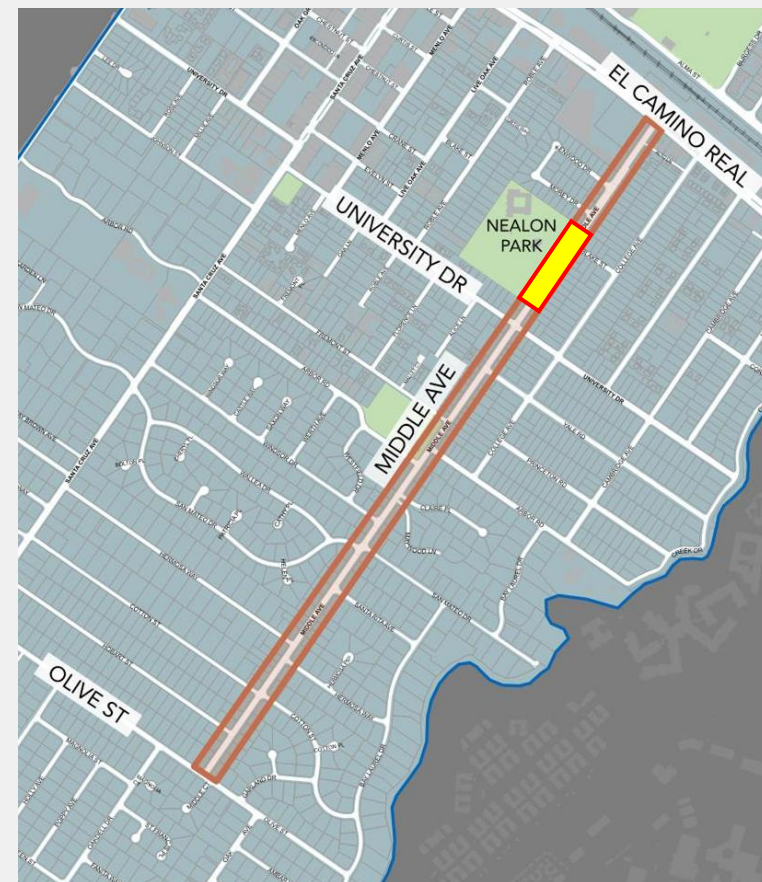


Image: Parallel parking pilot with shifted alignment, Oct 2023

# Existing Configuration

CONCEPTUAL DESIGN FOR COORDINATION PURPOSES ONLY

## EXISTING CONDITION



Parking Configuration	Number of Spaces
Back-In Angled Parking	28 (+3 ADA spaces) = 31 total spaces

# Remove Parking

Parking removal will remove 28 spots in direct proximity to the playground and preschool

## OPTION 1: REMOVE PARKING



Parking Configuration	Number of Spaces
Back-In Angled Parking	28 (+3 ADA spaces) = 31 total spaces
No parking, ADA only	3 ADA spaces = 3 total spaces

# Parallel Parking

Parallel option also reduces the number of parking spaces in direct proximity to the playground and preschool

## OPTION 2: INSTALL PARALLEL PARKING



Parking Configuration	Number of Spaces
Back-In Angled Parking	28 (+3 ADA spaces) = 31 total spaces
No parking, ADA only	3 ADA spaces = 3 total spaces
Parallel Parking	13 (+3 ADA spaces) = 16 total spaces



## Nealon Park Usage / Parking Needs

User Group / Facility	Typical Time of Use	Duration of Stay	Parking Characteristics
<b>Playground &amp; park users</b>	Midday, afternoons, weekends	30–90 minutes	High turnover
<b>Menlo-Atherton Cooperative Nursery School</b>	Weekday mornings & afternoons	15–90 minutes	Short stays, drop-off and pick-up
<b>Baseball games</b>	Weekday evenings, weekends, seasonal	2–3 hours	High, concentrated demand at seasonal, scheduled times
<b>Tennis / pickleball</b>	Mornings, afternoons, weekends, year-round	1–2 hours	Moderate turnover; overlapping arrivals

## Time-restricted parking

---

- Time-restricted parking is a parking management tool used to increase turnover
- Implementing time-restricted parking would require enforcement
- Current parking supply and demand patterns indicate parking demand does not exceed available capacity



Image: Parking Capacity on Monday 3/9 at 3 p.m.

# Observed Parking Conditions

---



Saturday 2/28 2 p.m.



Thursday 3/4 4 p.m.

# Observed Parking Conditions



Sunday 3/8 11 a.m.



Monday 3/9 7 p.m.



Tuesday 3/10 4 p.m.

## Staff Recommendation

---

- Retain the bike lane along Nealon Park in the roadway right-of-way
- Maintain the existing back-in angled parking configuration
- Do not reduce the overall parking supply
- Do not implement time-restricted parking

## Next Steps

---

- Staff recommends the Complete Streets Commission recommend conclusion of the Nealon Park Parking Pilot Project with the existing back-in angled parking configuration.